

# Portable AM/FM/Shortwave Radio

User's Guide for Model No. R616W v1422-01



## FCC Warnings

Warning: Changes or modifications to this unit not expressly approved by the party responsible for compliance could void the user's authority to operate the equipment.

NOTE: This equipment has been tested and found to comply with the limits for a Class B digital device, pursuant to Part 15 of the FCC Rules. These limits are designed to provide reasonable protection against harmful interference in a residential installation. This equipment generates, uses, and can radiate radio frequency energy and, if not installed and used in accordance with the instructions, may cause harmful interference to radio communications. However, there is no guarantee that interference will not occur in a particular installation. If this equipment does cause harmful interference to radio or television reception, which can be determined by turning the equipment off and on, the user is encouraged to try to correct the interference by one or more of the following measures:

- Reorient or relocate the receiving antenna.
- Increase the separation between the equipment and receiver.
- Connect the equipment into an outlet on a circuit different from that to which the receiver is connected.
- Consult the dealer or an experienced radio/TV technician for help.

## Additional Warnings and Precautions

- To reduce the risk of fire or electric shock, do not expose this apparatus to rain, moisture, dripping, or splashing.
- Battery shall not be exposed to excessive heat such as sunshine, fire or the like.
- Keep new and used batteries away from children. If the battery compartment does not close securely, stop using the product and keep it away from children.
- If you think batteries might have been swallowed or placed inside any part of the body, seek immediate medical attention.
- Completely replace all old batteries with new ones.
- Do not mix old and new batteries.
- Do not mix alkaline, standard (carbon-zinc), or rechargeable (ni-cad, ni-mh, etc) batteries.
- Batteries should be recycled or disposed of as per state and local guidelines.
- To avoid hearing damage, make sure that the volume on your music player is turned down before connecting your headphones. After placing headphones in or on your ears, gradually turn up the volume until you reach a comfortable listening level.
- WARNING: This product may contain chemicals known to the State of California to cause birth defects, or other reproductive harm (California Prop 65). Wash hands after handling.
- This product meets and complies with all Federal regulations.

## FEATURES & CONTROLS

### FEATURES

- Digital AM/FM/SW radio (PLL)
- Digital clock
- Single alarm with snooze
- Blue LCD display
- 12 or 24 hour clock
- Wake to radio and alarm
- Sleep timer
- Built-in AM antenna
- Telescopic FM/SW antenna
- Low battery indicator
- Built-in speaker
- 3.5mm headphone jack
- DC battery power: requires 2 AA batteries (not included)

### Clock

Press to display the time or radio information.

### 12/24

Press to switch between 12/24 hour clock.

### Hold

Press to lock all functions of the unit. *Can be used in any function mode.*

### Volume/ Snooze

Press to turn the volume up or down.  
Press to snooze alarm  
(See ALARM instructions on following page).

### M-/M+

Press to cycle through memory presets.

### Mem

Press to set a memory preset.

### Band

Press to switch between AM/FM/SW radio frequencies.

### Search

Press to adjust the radio frequency manually.  
Press and hold to automatically search for a radio station.

### DX

Press to enhance FM/SW sensitivity.

### Alarm

Press to begin setting an alarm.

### Sleep

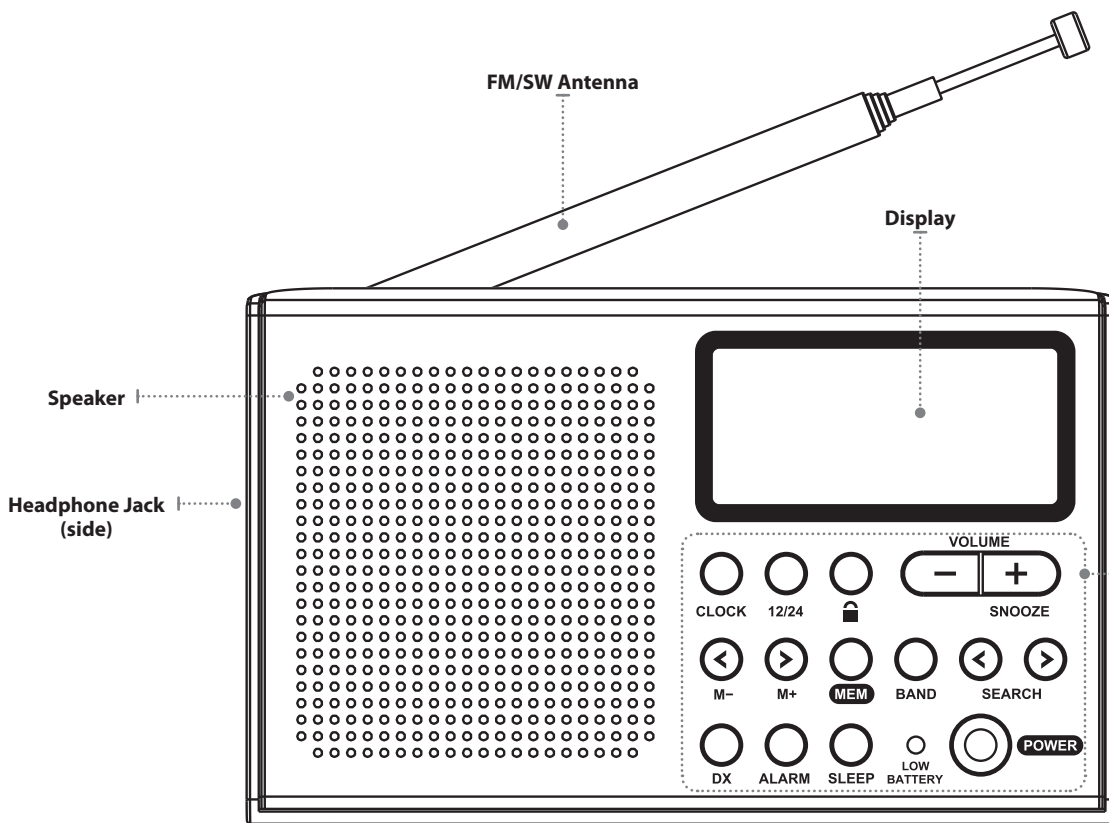
Press to begin setting Sleep Timer.

### Low Battery

Indicates batteries are low and will need to be replaced soon.

### Power

Press to power the unit ON or OFF.

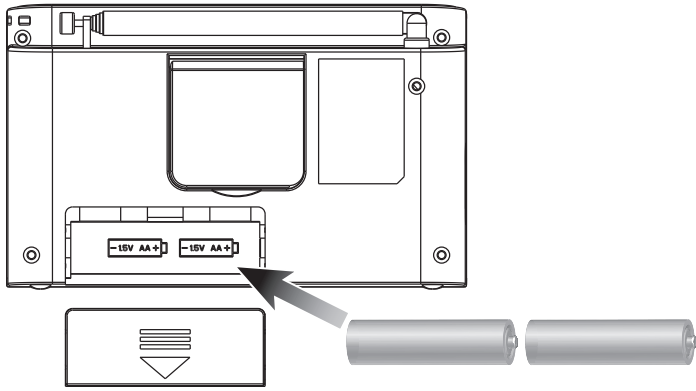


---

## BATTERY POWER

---

Requires 2 AA batteries (not included).



---

## CLOCK & SLEEP TIMER

---

### Setting the Clock

1. With the radio off, press the **Clock** button twice. *The LED display will begin flashing the time.*
2. Press the **M-/M+** buttons to set the hours. *"PM" will display when in 12 hour time format.*
3. Press the **Search** buttons to set the minutes.
4. The time is set when the display stops flashing.

### Setting the Sleep Timer

1. Press the **Sleep** button to begin setting the timer. *The time in minutes will be seen on the display. Example: 90 = 90 minutes, 80 = 80 minutes, etc.*
2. Keep pressing the **Sleep** button until the desired time is reached. Wait for the display to return to the radio information. *When the timer is set, the word "SLEEP" will be seen above the radio information.*
3. To turn the Sleep Timer off, set the time for "00". *The word "SLEEP" will disappear from the display.*

---

## ALARM

---

### Setting the Alarm

1. With the radio off, press the **Alarm** button twice. *The LED display will begin flashing the Alarm time.*
2. Press the **Alarm** button again to set the alarm for **buzzer, radio, or OFF**. *A bell indicates the alarm buzzer, a music note indicates radio, and no graphic indicates the alarm is off.*
3. Press the **M-/M+** buttons to set the hours.
4. Press the **Search** buttons to set the minutes.
5. The alarm time is set when the display stops flashing.

### SNOOZE & Alarm Off

1. Press the **SNOOZE** button to postpone the alarm for about 9 minutes. The alarm sounds again after this time.
2. Press the **POWER ON/OFF** button to stop the alarm. The alarm is switched off until the next day.

---

## INTERNATIONAL SUPPORT

---

To download this User's Guide in English, Spanish, or French, or to get answers to frequently asked questions, visit the support section at: [www.gpx.com](http://www.gpx.com)

Para descargar este Manual del Usuario en inglés, español y francés, o para obtener respuestas a preguntas frecuentes, visite la sección de apoyo en: [www.gpx.com](http://www.gpx.com)

Pour télécharger ce guide de l'utilisateur en anglais, espagnol ou français, ou pour obtenir des réponses à des questions fréquemment posées, consultez la rubrique d'assistance sur: [www.gpx.com](http://www.gpx.com)

For Warranty Information and the most up-to-date version of this User's Guide, go to [www.gpx.com](http://www.gpx.com)

**Customer Service:** 1-888-999-4215 | **Email Support:** [prodinfo@dpiinc.com](mailto:prodinfo@dpiinc.com) | **Email Parts:** [partsinfo@dpiinc.com](mailto:partsinfo@dpiinc.com)

Copyright © 2014 Digital Products International (DPI, Inc.) All other trademarks appearing herein are the property of their respective owners. Specifications are subject to change without notice.

---

## RADIO

---

An AM antenna is built into the unit. To improve AM radio reception, adjust the position of the clock radio. To improve FM and SW radio reception, extend and adjust the position of the telescopic antenna on the rear of the unit.

### Tuning the AM or FM Radio

1. Press the **Band** button to switch between AM or FM.
2. Press the **Search** buttons to move up or down the frequency scale.

### Setting Memory Presets

1. Press the **Band** button to select the desired radio band: AM, FM, or SW.
2. Press the **Search** buttons to select the desired frequency.
3. Press the **Mem** button. *"P01" will begin flashing on the display.*
4. Press the **M-/M+** buttons to select which preset to save to (P01-P10). Press the **Mem** button again to set that preset.
5. Use the **M-/M+** buttons to quickly select radio presets. Each band, AM, FM and SW, has their own radio presets.

### Shortwave Radio

It is typical for shortwave radio reception to be poor or spotty. It is highly recommended to use the radio at night, as more frequencies are generally available. The shortwave frequency band on this model has six separate frequency ranges. These can be found on the back of the unit, on the retractable flap above the battery compartment.

### DX Button

Switch off the DX function if only stations with a high field strength are to be received. This is recommended, for example, if a desired weak local station is superimposed by stronger national channels.

To switch off the DX function, press the DX button when the device is switched on. The "DX" indicator then fades out from the display.

